

UR-B124/20

UNION RAIL WA BOLTED FIXING



Ph: 1800 099 788 | info@unionrail.com.au | www.unionrail.com.au

The Union Rail WA UR-B124/20 adjustable crane rail clip is designed to fix heavy rails in the most arduous applications.

It can withstand a horizontal force from the rail of 125kN

Its low profile allows it to be used with cranes that are fitted with guide rollers.

DIMENSIONS (mm):

REF NO.	A	B (FULL NUT)	C	WEIGHT kg
UR-B124-20-42	42	52	28	0.98

SPECIFICATIONS:

Max Side Load using Grade 8.8 Bolt: 125kN

Horizontal Rail Adjustment: 20 mm

The hexagon headed fixing bolt can be inserted from above or below the supporting structure – see adjacent configurations.

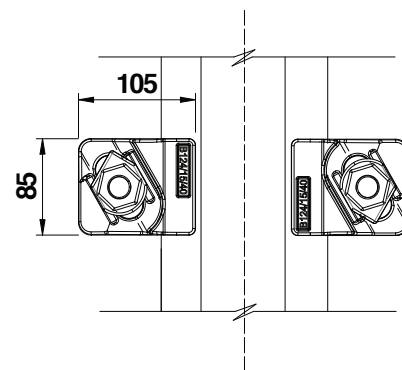
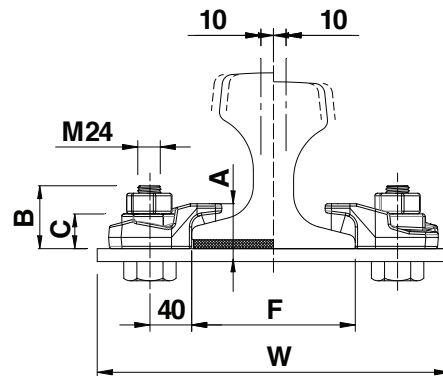
If it is desired to fix the clip with a welded stud, this may be possible.

TIGHTENING TORQUE:

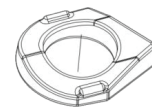
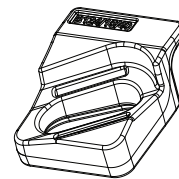
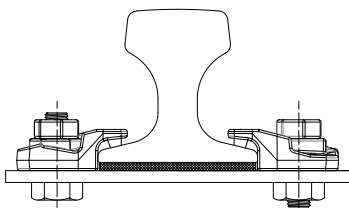
Grade 8.8 bolt 600Nm

RAIL WITH PAD

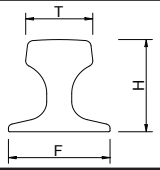
RAIL WITHOUT PAD



Minimum assembly width (W) = Rail Width (F) + 170mm



UR-B124/20

	F mm	T mm	H mm	RAIL WITH PAD	RAIL WITHOUT PAD
A100	200	100	95	UR-B124-20-42	UR-B124-20-42
A 120	220	120	105	UR-B124-20-42	UR-B124-20-42
A 150	220	150	150	UR-B124-20-42	UR-B124-20-42
MRS 87A	152	102	152	UR-B124-20-42	UR-B124-20-42
CR 73	140	100	135	UR-B124-20-42	UR-B124-20-42
CR 100	155	120	150	-----	UR-B124-20-42
QU 100	150	100	150	UR-B124-20-42	UR-B124-20-42
QU 120	170	120	170	UR-B124-20-42	UR-B124-20-42

This clip can be used for a wider selection of rails than illustrated. Please contact URWA for the full range of possible rails. URWA may change or improve their products and also alter specifications without notice.