

UR-W220/20

UNION RAIL WA WELDED BASE FIXING



Ph: 1800 099 788 | info@unionrail.com.au | www.unionrail.com.au

The Union Rail WA UR-W220/20 adjustable crane rail clip is designed to fix heavy rails in the most arduous applications.

It can withstand a horizontal force from the rail of 235kN

Its low profile allows it to be used with cranes that are fitted with guide rollers.

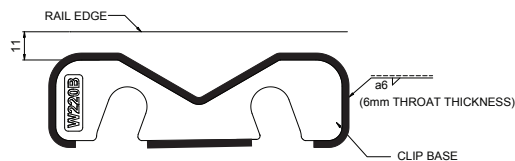
DIMENSIONS (mm):

REF NO.	A	B (FULL NUT)	C	WEIGHT kg
UR-W220-20-40	40	55	33	2.10
UR-W220-20-45	45	33	2.20	

SPECIFICATIONS:

Max Side Load using Grade 8.8 Bolt: 240kN

Horizontal Rail Adjustment: 20 mm

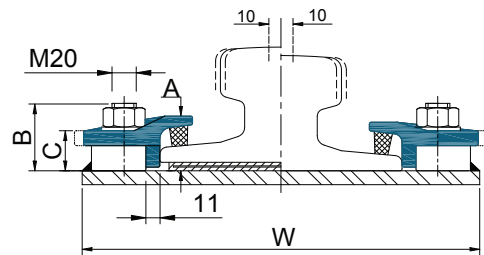


Weld along back and sides of clip base with a 6mm throat thickness fillet weld. Use low hydrogen electrodes.

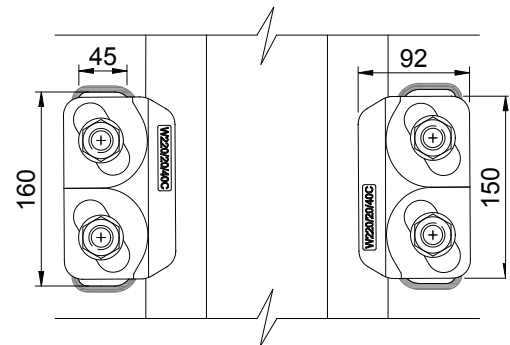
TIGHTENING TORQUE:

Grade 8.8 bolt 350Nm

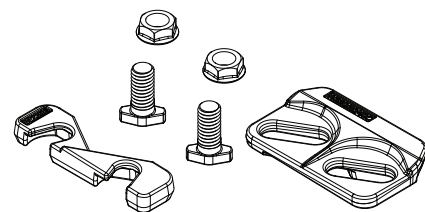
RAIL WITH PAD



RAIL WITHOUT PAD



Minimum assembly width (W)=Rail Width(F)+130mm



UR-W220/20

	F mm	T mm	H mm	RAIL WITH PAD	RAIL WITHOUT PAD
A 100	200	100	95	UR-W220-20-40	UR-W220-20-40
A 120	220	120	105	UR-W220-20-40	UR-W220-20-40
A 150	220	150	150	UR-W220-20-40	UR-W220-20-40
QU 100	150	100	150	UR-W220-20-40	UR-W220-20-40
QU 120	170	120	170	UR-W220-20-45	UR-W220-20-40

This clip can be used for a wider selection of rails than illustrated. Please contact URWA for the full range of possible rails. URWA may change or improve their products and also alter specifications without notice.