

UR-B112/10

UNION RAIL WA BOLTED FIXING

Ph: 1800 099 788 | info@unionrail.com.au | www.unionrail.com.au



The Union Rail WA UR-B112/10 adjustable crane rail clip is designed to fix heavy rails in the most arduous applications.

Its low profile allows it to be used with cranes that are fitted with guide rollers.

DIMENSIONS (mm):

REF NO.	A	B (FULL NUT)	C	WEIGHT kg
UR-B112-10-24	24	34	21	0.26
UR-B112-10-31	31	34	21	0.28

SPECIFICATIONS:

Max Side Load using Grade 8.8 Bolt: 22kN

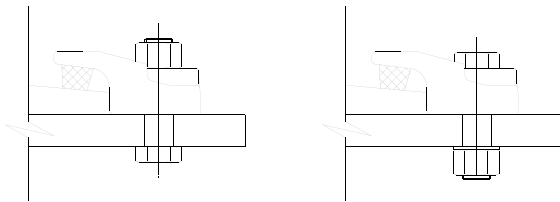
Horizontal Rail Adjustment: 10 mm

The hexagon headed fixing bolt can be inserted from above or below the supporting structure – see adjacent configurations.

If it is desired to fix the clip with a welded stud, this may be possible.

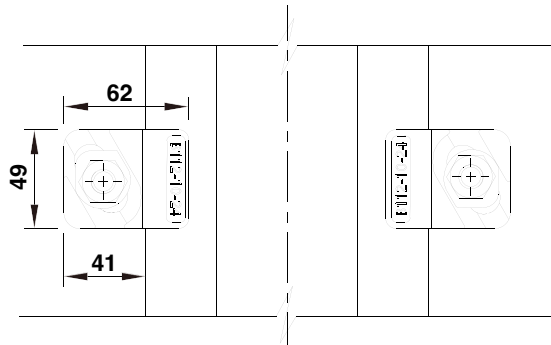
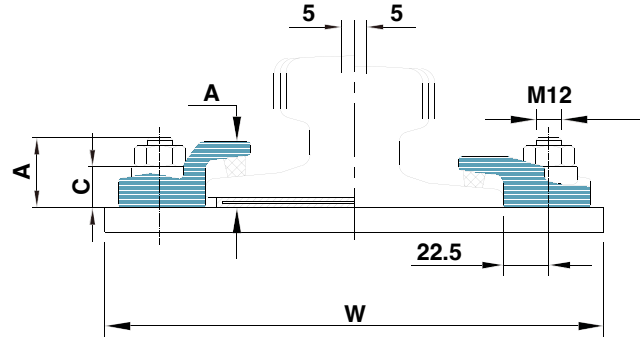
TIGHTENING TORQUE:

Grade 8.8 bolt 85Nm

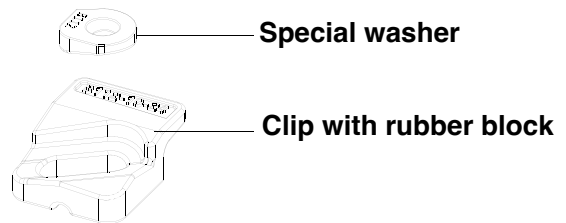


RAIL WITH PAD

RAIL WITHOUT PAD



Minimum assembly width (W)=Rail Width(F)+92mm



UR-B112/10

	F mm	T mm	H mm	RAIL WITH PAD	RAIL WITHOUT PAD
A 45	125	45	55	UR-B112-10-31	UR-B112-10-24
S7	50	25	65	UR-B112-10-31	UR-B112-10-24
S24	90	53	115	UR-B112-10-31	UR-B112-10-24
9kg/m	64	32	64	UR-B112-10-31	UR-B112-10-24
22kg/m	94	51	94	UR-B112-10-31	UR-B112-10-24
38kg/m	108	68	134	UR-B112-10-31	UR-B112-10-24
JIS22	94	51	94	UR-B112-10-31	UR-B112-10-24
JIS30	79	43	79	UR-B112-10-31	UR-B112-10-24

This clip can be used for a wider selection of rails than illustrated. Please contact URWA for the full range of possible rails. URWA may change or improve their products and also alter specifications without notice.